

Study for PhDs at UQ with CSC scholarships

Jin Zou (邹进)

j.zou@uq.edu.au



THE UNIVERSITY
OF QUEENSLAND
AUSTRALIA

Where is UQ?



Brisbane



- Home to 2 million residents
- Inner-city beach, cultural centres, museums, art galleries, mall, world-class international airport, and a multitude of shopping and recreation precincts
- Gateway to the Gold and Sunshine Coasts, tropical islands, theme parks, Great Barrier Reef, Daintree Rainforest, Outback, golden beaches, and endless tourist attractions and recreational facilities
- 243 days of sunshine throughout the year
- Vibrant, multicultural, international city

University Snapshot

- **Founded** in 1910
- **Staff** 6,816 full-time equivalent
- **Students**
 - Undergraduate - ~37,630
 - Postgraduate - ~13,120
 - Total - ~ 50,750
- **International students** > 11,500 from ~ 140 countries
- **Alumni** > 220,000
- **Chinese Students:** > 4000



Six multi-disciplinary faculties, comprising 32 schools and a large number of research centres, with broad and deep research and teaching strengths

- Business, Economics and Law
- **Engineering, Architecture and Information Technology**
- Health and Behavioural Sciences
- Humanities and Social Sciences
- Medicine and Biomedical Sciences
- Science



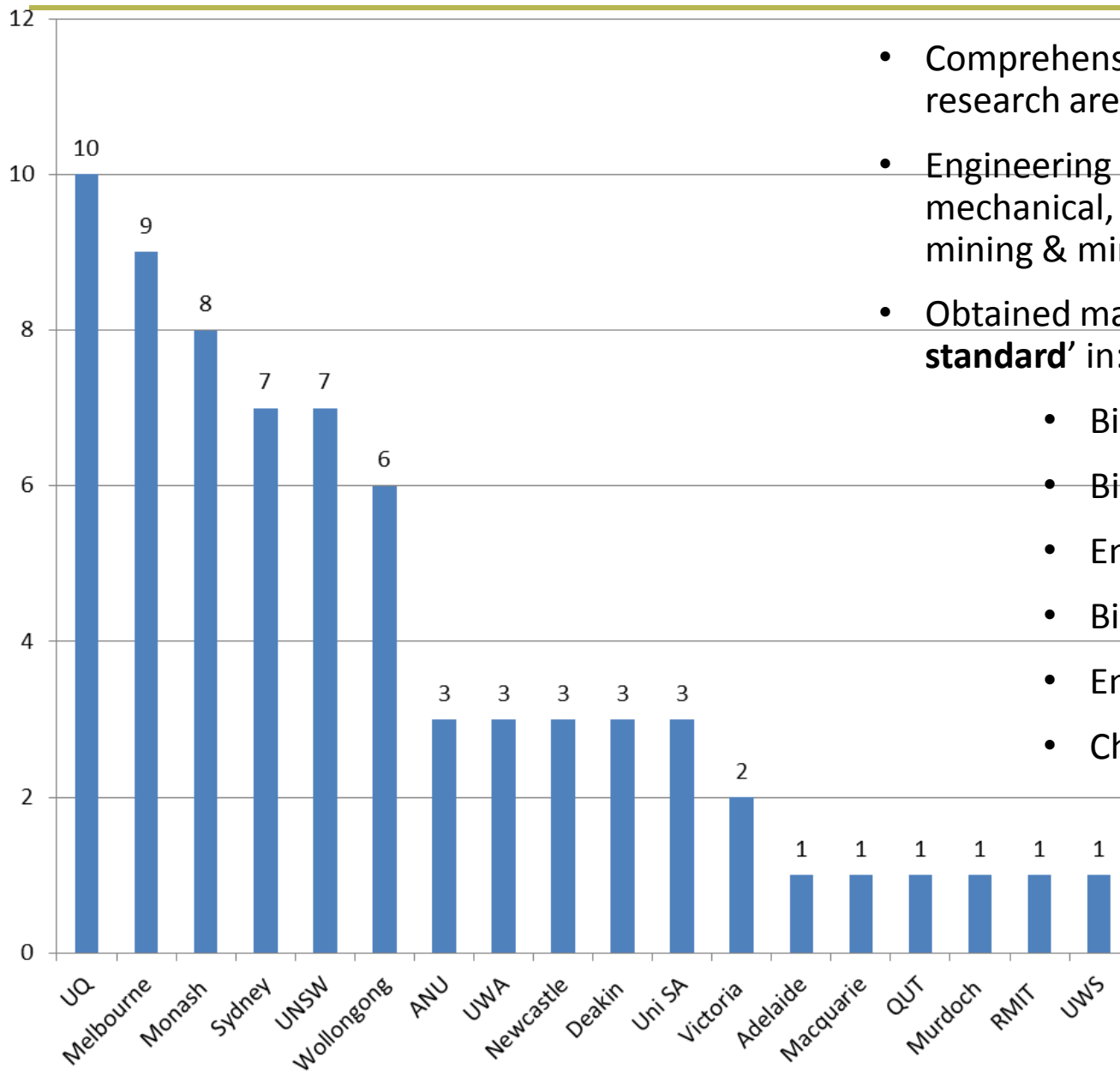
Research Institutes

UQ's existing research strengths developed through its six faculties have gained scale and focus with the establishment of eight research institutes.

- Australian Institute for Bioengineering and Nanotechnology (AIBN)
- Diamantina Institute for Cancer, Immunology and Metabolic Medicine (UQDI)
- Global Change Institute
- Institute for Molecular Bioscience (IMB)
- Institute for Social Science Research
- Queensland Alliance for Agricultural and Food Innovation
- Queensland Brain Institute (QBI)
- Sustainable Minerals Institute (SMI)



Excellence in Research for Australia (2010)



- Comprehensive – 24 out of possible 25 broad research areas
- Engineering rated as nationally leading in mechanical, materials, environmental, chemical, mining & minerals, biomedical, nanotechnology
- Obtained maximum level 5 '**well above world standard**' in:
 - Biomedical and Clinical Health Sciences
 - BioTechnology
 - Engineering
 - Biological Sciences
 - Environmental Sciences
 - Chemical Sciences and Physical Sciences

■ 4+5

Institution	Engineering Disciplines																	
	09 Engineering	0901 Aerospace Engineering	0902 Automotive Engineering	0903 Biomedical Engineering	0904 Chemical Engineering	0905 Civil Engineering	0906 Electrical and Electronic Engineering	0907 Environmental Engineering	0908 Food Sciences	0909 Geomatic Engineering	0910 Manufacturing Engineering	0911 Maritime Engineering	0912 Materials Engineering	0913 Mechanical Engineering	0914 Resources Engineering and Extractive Metallurgy	0915 Interdisciplinary Engineering	0999 Other Engineering	
Australian Catholic University	n/a	n/a	n/a	n/a	n/a	n/a	n/a	n/a	n/a	n/a	n/a	n/a	n/a	n/a	n/a	n/a	n/a	
Australian National University	4	n/a	n/a	n/a	n/a	n/a	5	n/a	n/a	n/a	n/a	n/a	4	n/a	n/a	n/a	n/a	
Batchelor Institute of Indigenous Tertiary Education	n/a	n/a	n/a	n/a	n/a	n/a	n/a	n/a	n/a	n/a	n/a	n/a	n/a	n/a	n/a	n/a	n/a	
Bond University	n/a	n/a	n/a	n/a	n/a	n/a	n/a	n/a	n/a	n/a	n/a	n/a	n/a	n/a	n/a	n/a	n/a	
Central Queensland University	2	n/a	n/a	n/a	n/a	n/a	n/a	n/a	n/a	n/a	n/a	n/a	n/a	2	n/a	n/a	n/a	
Charles Darwin University	n/a	n/a	n/a	n/a	n/a	n/a	n/a	n/a	n/a	n/a	n/a	n/a	n/a	n/a	n/a	n/a	n/a	
Charles Sturt University	n/a	n/a	n/a	n/a	n/a	n/a	n/a	n/a	n/a	n/a	n/a	n/a	n/a	n/a	n/a	n/a	n/a	
Curtin University of Technology	3	n/a	n/a	n/a	4	2	3	n/a	n/a	n/a	n/a	n/a	1	4	3	n/a	n/a	
Deakin University	4	n/a	n/a	n/a	n/a	n/a	3	n/a	n/a	n/a	4	n/a	5	4	n/a	n/a	n/a	
Edith Cowan University	2	n/a	n/a	n/a	n/a	n/a	1	n/a	n/a	n/a	n/a	n/a	n/a	n/a	n/a	n/a	n/a	
Flinders University	2	n/a	n/a	3	n/a	n/a	n/a	n/a	n/a	n/a	n/a	n/a	n/a	n/a	n/a	n/a	n/a	
Griffith University	2	n/a	n/a	n/a	n/a	2	2	2	n/a	n/a	n/a	n/a	n/a	n/a	n/a	n/a	n/a	
James Cook University	3	n/a	n/a	n/a	n/a	2	n/a	n/a	n/a	n/a	n/a	n/a	4	n/a	n/a	3	n/a	
La Trobe University	n/a	n/a	n/a	n/a	n/a	n/a	n/a	n/a	n/a	n/a	n/a	n/a	n/a	n/a	n/a	n/a	n/a	
Macquarie University	3	n/a	n/a	n/a	n/a	n/a	3	n/a	n/a	n/a	n/a	n/a	n/a	n/a	n/a	n/a	n/a	
MCD University of Divinity	n/a	n/a	n/a	n/a	n/a	n/a	n/a	n/a	n/a	n/a	n/a	n/a	n/a	n/a	n/a	n/a	n/a	
Monash University	5	4	n/a	5	5	5	4	n/a	n/a	n/a	n/a	n/a	5	4	n/a	5	n/a	
Murdoch University	3	n/a	n/a	n/a	n/a	n/a	n/a	n/a	n/a	n/a	n/a	n/a	n/a	n/a	5	n/a	n/a	
Queensland University of Technology	3	n/a	n/a	3	n/a	2	3	4	n/a	n/a	n/a	n/a	5	4	n/a	n/a	n/a	
RMIT University	4	4	n/a	n/a	3	3	4	n/a	3	n/a	n/a	n/a	4	4	n/a	n/a	n/a	
Southern Cross University	n/a	n/a	n/a	n/a	n/a	n/a	n/a	n/a	n/a	n/a	n/a	n/a	n/a	n/a	n/a	n/a	n/a	
Swinburne University of Technology	4	n/a	n/a	n/a	n/a	2	n/a	n/a	n/a	n/a	n/a	5	4	3	n/a	n/a	n/a	
University of Adelaide	3	n/a	n/a	n/a	3	4	3	n/a	3	n/a	n/a	n/a	n/a	3	4	n/a	n/a	
University of Ballarat	2	n/a	n/a	n/a	n/a	n/a	n/a	n/a	n/a	n/a	n/a	n/a	n/a	n/a	n/a	n/a	n/a	
University of Canberra	n/a	n/a	n/a	n/a	n/a	n/a	n/a	n/a	n/a	n/a	n/a	n/a	n/a	n/a	n/a	n/a	n/a	
University of Melbourne	5	n/a	n/a	3	4	3	4	4	n/a	3	n/a	n/a	5	5	n/a	n/a	n/a	
University of New England	n/a	n/a	n/a	n/a	n/a	n/a	n/a	n/a	n/a	n/a	n/a	n/a	n/a	n/a	n/a	n/a	n/a	
University of New South Wales	4	n/a	n/a	4	4	4	5	n/a	n/a	3	n/a	n/a	4	3	5	n/a	n/a	
University of Newcastle	5	n/a	n/a	n/a	n/a	5	5	n/a	2	n/a	n/a	n/a	n/a	5	5	3	n/a	
University of Notre Dame Australia	n/a	n/a	n/a	n/a	n/a	n/a	n/a	n/a	n/a	n/a	n/a	n/a	n/a	n/a	n/a	n/a	n/a	
University of Queensland	5	n/a	n/a	3	5	3	3	5	3	n/a	n/a	n/a	5	4	4	n/a	n/a	
University of South Australia	4	n/a	n/a	n/a	n/a	3	3	n/a	n/a	n/a	n/a	n/a	4	4	5	n/a	n/a	
University of Southern Queensland	2	n/a	n/a	n/a	n/a	n/a	n/a	n/a	n/a	n/a	n/a	n/a	2	n/a	n/a	n/a	n/a	
University of Sydney	5	5	n/a	3	4	4	4	n/a	n/a	n/a	n/a	n/a	5	4	n/a	n/a	n/a	
University of Tasmania (inc. Australian Maritime College)	2	n/a	n/a	n/a	n/a	n/a	n/a	n/a	3	n/a	n/a	3	n/a	n/a	n/a	n/a	n/a	
University of Technology, Sydney	3	n/a	n/a	4	4	3	3	n/a	n/a	n/a	n/a	n/a	4	3	n/a	n/a	n/a	
University of the Sunshine Coast	n/a	n/a	n/a	n/a	n/a	n/a	n/a	n/a	n/a	n/a	n/a	n/a	n/a	n/a	n/a	n/a	n/a	
University of Western Australia	4	n/a	n/a	n/a	n/a	4	4	4	n/a	n/a	n/a	n/a	3	4	n/a	n/a	n/a	
University of Western Sydney	3	n/a	n/a	n/a	n/a	3	3	n/a	n/a	n/a	n/a	n/a	3	4	n/a	n/a	n/a	
University of Wollongong	4	n/a	n/a	n/a	n/a	4	4	n/a	n/a	n/a	4	n/a	5	3	3	5	n/a	
Victoria University	3	n/a	n/a	n/a	3	3	5	n/a	3	n/a	n/a	n/a	n/a	n/a	n/a	n/a	n/a	
Total UoEs evaluated	29	3	0	8	10	19	21	5	6	2	2	2	18	18	8	4	0	

UQ Engineering & Technology Global Rankings



QS 2014

20th Chemical Engineering

42nd Civil and Structural

39th Computer Science and Information Systems

51-100 Electrical

51-100 Mechanical, Aeronautical & Manufacturing

47th Engineering & Technology (2013)

Times 2013

43rd Engineering & Technology

Academic Ranking of World Universities 2013

76-100 Engineering/Technology and Computer Science

Institution outputs

1 August 2014 - 31 July 2015

Institution search

Begin typing your query to generate a list of suggested institutions

Go

Generate a table of institutions ordered by research outputs. Using the drop-down menus, choose the region or country of interest, filter by subject area or journal group, and select the sorting method – **Article count (AC)**, **Fractional count (FC)**, **Weighted fractional count (WFC)** or alphabetical. Once generated, the table can be resorted by clicking on the relevant column heading.

Institution outputs

Region/country

Australia

Sector

Academic

Subject/journals

All

Sort by

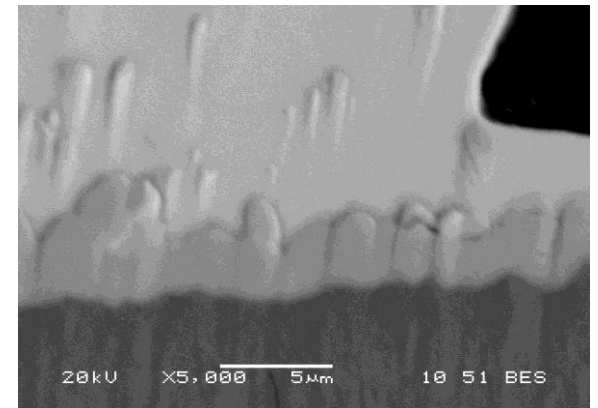
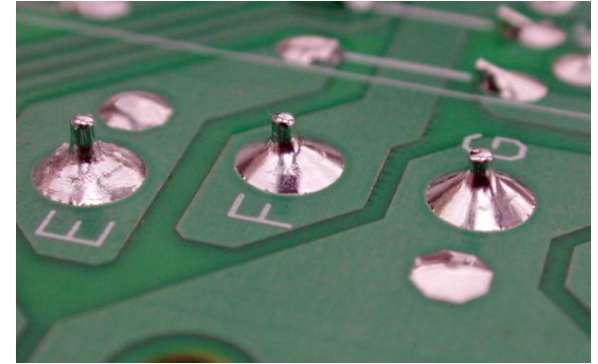
Weighted fract

Generate

Note: There are many institutions with foreign research facilities located outside of their home country. Region/country outputs contain articles affiliated with facilities located in the selected region/country.

Institution	AC	FC	WFC
1. The University of Queensland (UQ)	438	103.23	100.16
2. Monash University	420	116.25	96
3. Australian National University (ANU)	557	135.74	91.71
4. The University of Sydney (USYD)	470	100.14	77.70
5. University of New South Wales (UNSW)	300	81.29	75.07
6. The University of Melbourne (UniMelb)	497	84.71	73.07
7. The University of Western Australia (UWA)	341	47.59	36.22
8. The University of Adelaide (Adelaide Uni)	116	30.81	29.55
9. Curtin University	230	29.27	21.13
10. RMIT University	70	19.95	19.95

- Houses 130 academic staff and 220 research staff
- Provides education for more than
 - 500 PhD students
 - 5,000 undergraduate students
 - 300 postgraduate coursework students
- More than 700 researchers
- Annual research grant income of >\$40 million
- Annual research budget of >\$60 million



Ni modified Pb-free solders for microelectronics

- School of Mechanical and Mining Engineering
- School of Chemical Engineering
- School of Civil Engineering
- School of Information Technology & Electrical Engineering (ITEE)
- School of Architecture
- Advanced Water Management Centre (AWMC)

Research Strength of Mech/Mater/Min Eng

Mechanical

Combustion
Hypersonics
Geothermal Energy
Mechatronics – Smart
Machines

Materials

Corrosion
Light Metals
Nanomaterials
Computational Materials Science
Powder Metallurgy
Surface Engineering

Mining

Mine Planning
Mining Methods
Safety & Environment
Rock Mechanics

Contact Email: rhadmin@mechmining.uq.edu.au

Potential supervisors for Mech, Mater, & Min:
<http://www.mechmining.uq.edu.au/academic-staff>



Research Strength of Chemical Engineering

Australia's Top Chem.Eng. school



Materials & Chemical
Product Engineering



Environmental
Engineering



Biological & Biomedical
Engineering



Metallurgical Engineering

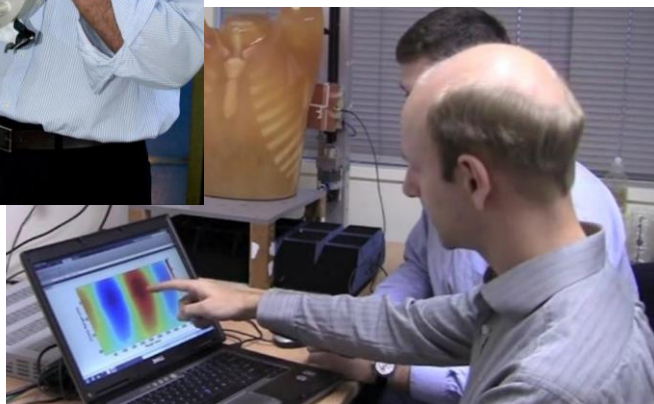
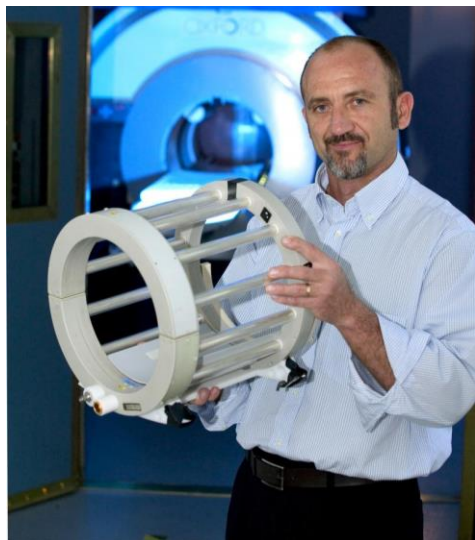
Major Research Areas

- Climate change
- Renewable energy supply and distribution
- Water Management
- Food supply and security
- Processing and transforming minerals and other natural resources
- Biological systems
- Advanced materials

Potential supervisors of Chemical Engineering:

<http://www.chemeng.uq.edu.au/our-people#academic>

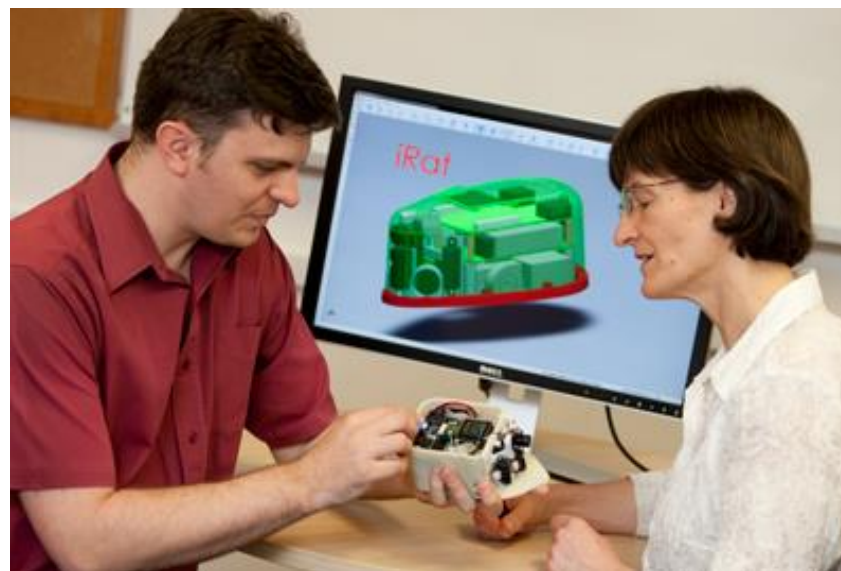
Research Strength of ITEE



Complex and Intelligent Systems
Security and Surveillance
Systems and Software Engineering
Interaction Design
Ubiquitous Computing
Data and Knowledge Engineering
eResearch

RESEARCH STRENGTHS:

Biomedical Engineering
Sleep and Respiratory Systems
Cognitive Systems Engineering
Microwave, Photonics and Communications
Power and Energy Systems
Robotics



Potential supervisors of ITEE:

<http://www.itee.uq.edu.au/contacts/#ou0>

Research Strength of Civil Engineering

RESEARCH STRENGTHS:

Coastal and Ocean Engineering

Geotechnical Engineering

Hydraulic Engineering



Potential PhD projects of Civil Eng: <http://www.civil.uq.edu.au/projects>

Research Strength of Architecture

UQ Architectural research has been ranked top nationally in 2010 ERA ranking.

RESEARCH PROGRAMS:

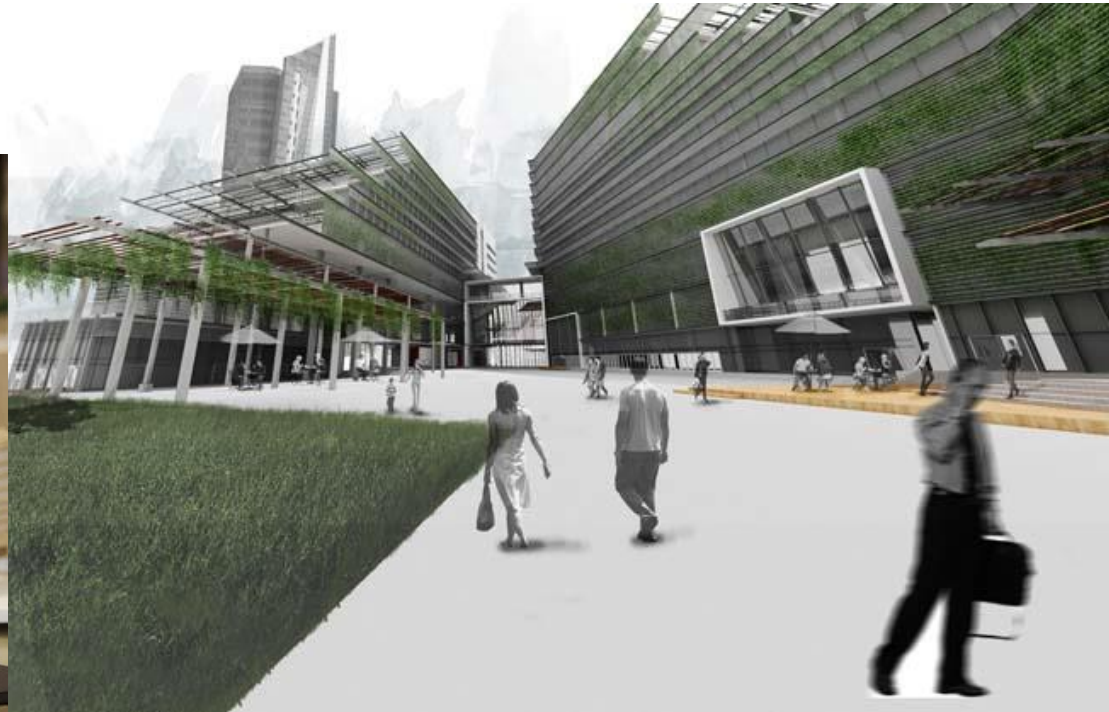
Aboriginal Environments

Architectural Design

Architecture Theory Criticism History

Sustainable Design

Contact email: uqrhdarc@uq.edu.au



Potential supervisors of Architecture: <http://www.architecture.uq.edu.au/academic-staff>

The **Advanced Water Management Centre (AWMC)** at UQ is an internationally recognised centre of excellence in innovative water technology and management.

RESEARCH PROGRAMS:

Anaerobic Technologies

Bioelectrochemical

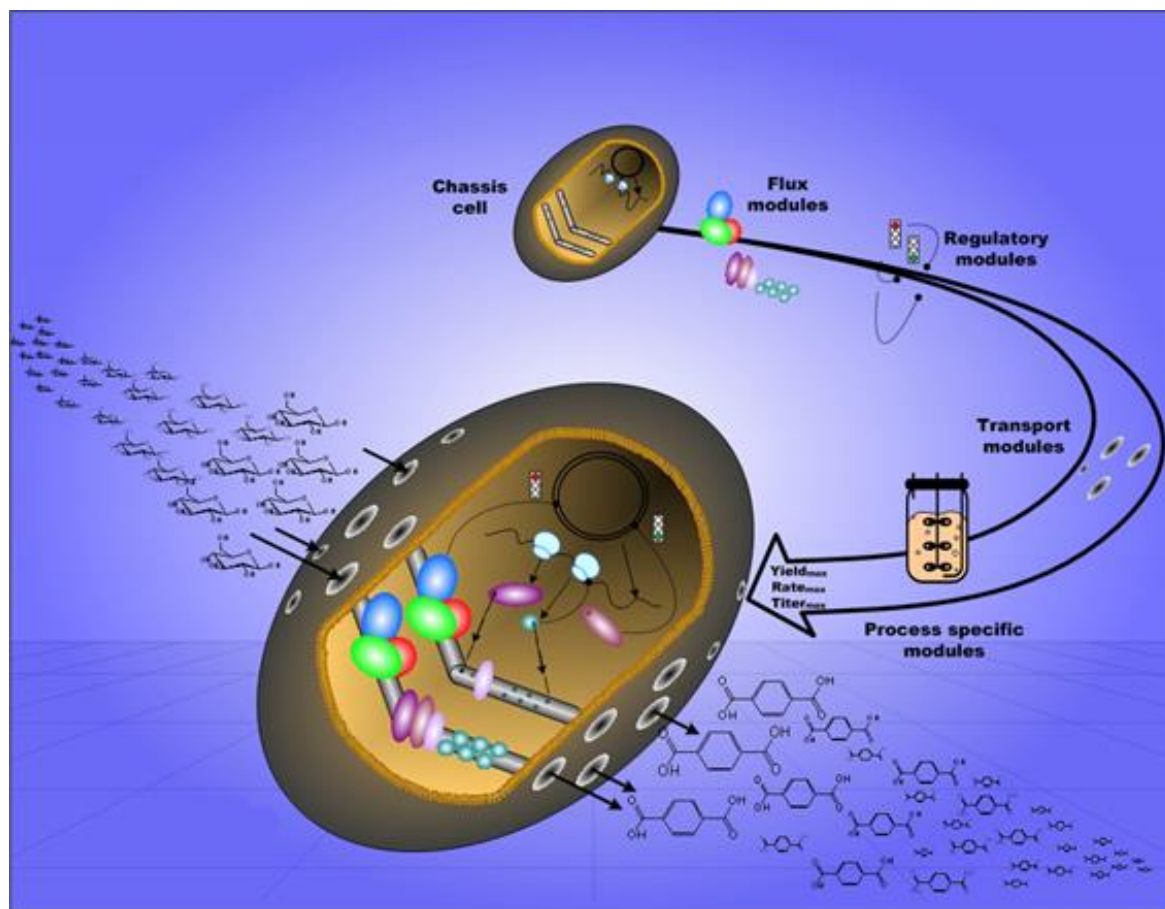
Microbial Electrosynthesis

Greenhouse Gas

Microbial Ecology

Sewer Corrosion and Odour

Water Recycling



Background of the CSC PhD Program

- Based on the State Council's *National Outline for Medium and Long Term Science and Technology Development* (2006-2020), CSC initiated its first 5-year PhD program in 2007 – Finished in 2011
- Based on the State Council's *National Outline for Medium and Long Term Science and Technology Development* (2006-2020), *National Program for Medium and Long term Talent Development* (2010-2020), and *National Outline for Medium and Long Term Education Reform and Development* (2010-2020), CSC developed and launched its second 5-year Student program in 2012.
- CSC aims to send 1st Class students to 1st Class global universities/institutes to carry out research projects with 1st Class supervisors
- CSC expects returning students to possess *Globe vision, Creative and innovative, Understanding the international regulations, Ability to participate the international affairs*

- Key fields
 - Energy, Water/mineral resources, Environmental, Agriculture, Manufacture, Transportation, Information, Population/health, City/urban planning, Safety, and Defence
- Frontier technologies
 - Life Science, Information, New materials, Advanced manufacture/energy technology, Ocean technologies, Laser technologies, and Space technologies
- Humanities and Social Sciences (Limitation applied)

- **PhD programs:**
 - Bachelor graduates
 - Masters students
 - First year PhD students
 - **Exchange PhD programs** (Research Study Abroad Program or Occupational Trainee Program):
 - Current PhD students with a maximum stay of 12 months
- Note: EAIT has a strict rule on academics to take occupational trainees and you need to meet UQ's English requirement for international students

- **Meeting the prior research training requirement** - Minimum academic achievement, research experience and English proficiency requirements apply. Details can be found in the link below
<http://www.uq.edu.au/grad-school/our-research-degrees>.
- **PhD program** - General Award Rules 4.4.4
 - Undergraduate degree Honours IIA or equivalent, which includes a relevant research component
 - Postgraduate degree, which includes a relevant research component
 - Undergraduate degree plus a minimum of two years relevant research experience (documentary evidence required)
- **English Language Proficiency requirements** –
 - <https://ppl.app.uq.edu.au/content/3.40.14-english-language-proficiency-admission-and-concurrent-support>

- From CSC:
 - International Travel
 - Living stipend (A\$20,400 per year)
 - Overseas Student Health Insurance (be part of living stipend)
- From UQ
 - UQI tuition fee scholarship available for CSC students who meet UQ requirements.
 - Top-up scholarship might be available to match Australian Postgraduate Award (A\$26,288 per year - 2016 figure)

Application process - 1

- Check “UQ Researchers” or “UQ experts” websites to identify your potential supervisor
<http://researchers.uq.edu.au>
or, the academic staff website of enrolling school
or, the list projects uploaded in the your university website.
- Email your potential supervisor to express your interest in studying for a PhD under his/her supervision; together with your CV and academic transcript(s), and your obtained degree certificate(s); also you should mention that you are applying for a CSC scholarship (some academics may not be aware of the CSC program)
- If your supervisor decides to support you, you and your supervisor should work on your application form (can be downloaded from link below)

<http://www.uq.edu.au/grad-school/how-to-apply>

Application process - 2

- Submit your application - the application form with other requested documents, e.g. your CV, academic transcript(s) and degree certificate(s), and English certificate(s) to the postgraduate admin officer of the enrolling school
 - Make sure you meet UQ English Language Proficiency requirement when you submit your admission package (English test results are valid for 2 years only, and must still be valid upon commencement at UQ)
 - IELTS minimum score: 6.5 overall, 6.0 in all sub-bands, or
 - IBTOEFL minimum score: 87 overall, 21 in writing, 19 in other sub-bands
 - You need to identify two academic referees to prepare recommendation letters (the form can be downloaded from the link below) and letters should be sent by your referees to your potential supervisor and the the postgraduate admin officer directly

<http://www.uq.edu.au/grad-school/how-to-apply>

Application timelines

- Before **December 2015**: Admission application package should be lodged to the postgraduate admin officer of the enrolling school
- December 2015, all applications will be rigorously screened by the research committee of the enrolling school. Unsuccessful applications will be notified in early January 2016
- January 2016, the eligibility of all applications will be assessed by UQ Graduate School (it is very rare the applications to be killed)
- Late January or early February 2016: UQ admission and tuition fee scholarship offers will be sent to successful candidates; and unsuccessful applications will also be notified
- From late February to early April 2016: CSC application starts

Note: Late applications will not be accepted

- **UQ Admission Offer Letter** (this can be conditional, but English requirement must be met) – Note that the *title of research project, name of advisory team, and contact details of advisory team* will NOT be shown in the offer letter and CSC accepts this.
- **UQI Tuition Fee Scholarship Offer Letter** (this is conditional on being awarded the CSC scholarship, you will need to provide a copy of CSC scholarship offer letter to UQ to receive the unconditional offer)
 - The UQ enrolment counts as quarters, success students will be offered for 12 quarters tuition fee waiving with possible of 2 quarters extension. However, students should apply for 48 months financial support from CSC
- **Supervisor's CV**
- **Research Proposal signed by Your Supervisor** (both in English and Chinese)

- Research Study Abroad Program
 - The CSC student will be enrolled at UQ Graduate School as a formal program of study. Students will have the benefits of being a formal student and can receive an academic transcript at the end of their study.
 - Importantly, the research carried out at UQ must be part of the student's PhD thesis.
 - Student must have enrolled for PhD program for > 1 year.
- Occupational Trainee Program
 - The CSC student aims to develop research experiences at UQ only.
 - The research carried out at UQ is Not necessary being part of his/her PhD thesis.

Exchange PhD Programs

- Research Study Abroad Program
 - Duration will be 2-4 quarters
- Occupational Trainee Program
 - Duration should be up to 1 year
- Research Study Abroad Program/Occupational Trainee Program
 - No top-up scholarship
 - Minimum English requirement for the UQ students must be met
 - Students should contact to potential supervisors to develop a research plan
 - The research plan should be approved by the head of enrolling unit

Expected CSC selection timelines

- From March 2016: CSC application starts
- April/May 2016: CSC assessment starts
- May/June 2016: Successful candidates announced and CSC will send a list of success CSC applicants to UQ graduate school
- October 2016 onwards – Arriving in UQ



Welcome to UQ!